

AM9018 – Receiver Mini Module

0.9 GHz to 18 GHz Wideband Miniature Tuner Module

High performance and low SWaP (size, weight and power)

- Fully integrated tuner module provides high dynamic range coverage of 0.9 GHz to 18 GHz
- Also provides a bypass path from 10 MHz to 6 GHz for direct spectrum capture
- Multiple tuner sets can be configured to work together for coherent operation and N-channel applications



AM9018 is a fully integrated tuner module that provides high dynamic range coverage from 0.9 GHz to 18 GHz. The tuner also provides a bypass path from 10 MHz to 6 GHz for direct spectrum capture. The heterodyne tuner module is designed for high performance and low size, weight, and power (low SWaP) and is mechanically mountable to a host circuit board for use in multi-channel receiver applications.

Input limiter, sub-octave preselectors, pre-amplifiers, local oscillators, frequency converters, ADC driver amplifiers, power and control line filtering, a temperature sensor, and a control FPGA are included as well as a calibration input port. The analog IF output frequency is centered at 2 GHz with a 1 GHz bandwidth. Multiple tuner sets can be configured to work together for coherent operation and N-channel applications. Interfacing to the tuner is accomplished by simply providing an RF input, DC voltages, frequency reference, SPI control, and routing the IF output.

FEATURES

- 0.9 GHz to 18 GHz Frequency Range
- 1 GHz Bandwidth
- 2 GHz IF Output Frequency
- 10 MHz to 6 GHz Tuner Bypass Path
- Optional 500 MHz bandwidth with 1GHz IF center
- Input Signal Limiter
- Calibration Input Port
- Integrated Temperature Sensor
- 14 dB Noise Figure, +5 dBm IIP3
- +5.0V and +3.3V DC Operation
- 6.0 W Max Power Consumption
- -40C to +85C Operation
- 1.6oz / 45g Module Weight
- 1.40" x 3.00" x 0.270" (35.6 x 76.2 x 6.8 mm)

Note: This is an overview version of the AM9018 datasheet. Contact MMIC Sales for the full datasheet: MMICsales@rcry.com.

CONTENTS

REVISION HISTORY..... 2

PART ORDERING DETAILS..... 2

SPECIFICATIONS..... 3

MECHANICAL DETAILS..... 5

EVALUATION PC BOARD..... 6

REVISION HISTORY

Date	Revision	Notes
August 11, 2020	1	Preliminary Release.
November 6, 2020	2	Updated dimensions.
January 8, 2021	3	Updated module size.
January 15, 2021	4	Pinout for multipin.
September 10, 2021	5	Initial Release.
April 1, 2022	6	Updated part ordering details. Added weight.
August 5, 2024	7	Changed to Mercury branding. No content changes.
February 18, 2025	7.2	Part Ordering Details Modified.

PART ORDERING DETAILS

Part Number	Description
AM9018-1	Stand-alone Tuner Module, 2.0 GHz IF Output w/ 1 GHz Bandwidth
AM9018-1EVAL	Single Channel AM9018-1 Evaluation Board
AM9018-1EVAL-2CH	Dual Channel AM9018-1 Evaluation Board
AM9018-1EVAL-4CH	Quad Channel AM9018-1 Evaluation Board
AM9018-30TR-EVAL	Dual Channel Transmit/Receive Evaluation Board. Includes one AM9018-1 18 GHz Receiver Module and one AM9030 18 GHz Transmitter Module on a single evaluation board.

Note: Eval boards include low-dropout regulators, reference distribution circuitry, and control circuitry. All that is required for operation is an input signal, a reference, and a Windows computer for the USB control of the evaluation board. See “Evaluation PC Board” section for more details. The output may be driven into a spectrum analyzer or directly into an ADC. Contact Mercury for ADC recommendations.

SPECIFICATIONS

Absolute Maximum Ratings

	Testing Conditions	Min	Maximum
RF Input Power	Pulsed		9.0 W
	Continuous Wave		2.0 W
+5.0 VDC Supply			+5.5 V
+3.3 VDC Supply			+3.6 V
Operating Temperature		-40 C	+85 C
Storage Temperature Range		-55 C	+150 C

Note: Any device operation beyond the Absolute Maximum Ratings may result in permanent damage to the device. The values listed in this table are extremes and do not imply functional operation of the device at these or any other conditions beyond what is listed under Recommended Operating Conditions. Any part subjected to conditions outside of what is recommended for an extended amount of time may suffer from reliability concerns.

Handling Information

	Minimum	Maximum
Storage Temperature Range (Recommended)	-50 C	+125 C



Mercury products are electrostatic sensitive. Follow safe handling practices to avoid damage.

Recommended Operating Conditions

	Minimum	Typical	Maximum
Operating Case Temperature	-40 C		+70 C

DC Electrical Characteristics

(T = 25 °C unless otherwise specified)

Param	Testing Conditions	Min	Typical	Max
+5 VDC Supply		+4.8 V	+5.0 V	+5.2 V
+3.3 VDC Supply		+3.2 V	+3.3 V	+3.5 V
+5 VDC Current				0.5 A
+3.3 VDC Current				1.1 A
Power Dissipated				6.1 W
Logic Level Low		0 V		+0.8 V
Logic Level High		+2.0 V		+3.5 V

RF Performance¹

(T = 25 °C unless otherwise specified)

Param	Notes	Min	Typical	Max
Frequency Range	Heterodyne Path	0.9 GHz		18 GHz
	Bypass Path	10 MHz		6 GHz
Instantaneous Bandwidth			1.0 GHz	
IF Center Frequency			2.0 GHz	
Tune Frequency Range		1.4 GHz		17.5 GHz
Tuning Step Size			5 MHz	
Frequency Reference	External 100 MHz (note 3)	-2dBm (0.5Vpp)	+6 dBm	+13.5dBm (3Vpp)
Input Limiter P1dB			+14 dBm	
Input Limiter Recovery Time			10 ps	
Input IP3			+5 dBm	
Input IP2			+60 dBm	
Noise Figure			14 dB	
Image Rejection		70 dB		
IF Rejection	Stopband Relative to Passband	70 dB	80 dB	
LO Radiation	Measured at Antenna In		-80 dBm	
LO Leakage	Measured at IF Output		-70 dBm	
Gain			24 dB +/-2dB	
Gain Control	(Note 1)		45 dB	
Tuning Speed	(Note 2)		100 μs	450 μs
Phase Noise	1 kHz Offset		-90 dBc/Hz	
	10 kHz Offset		-100 dBc/Hz	
	100 kHz Offset		-100 dBc/Hz	
	1 MHz Offset		-106 dBc/Hz	
	10 MHz Offset		-127 dBc/Hz	

Note 1: Additional gain control beyond calibrated gain, in 1 dB steps. Heterodyne path only.

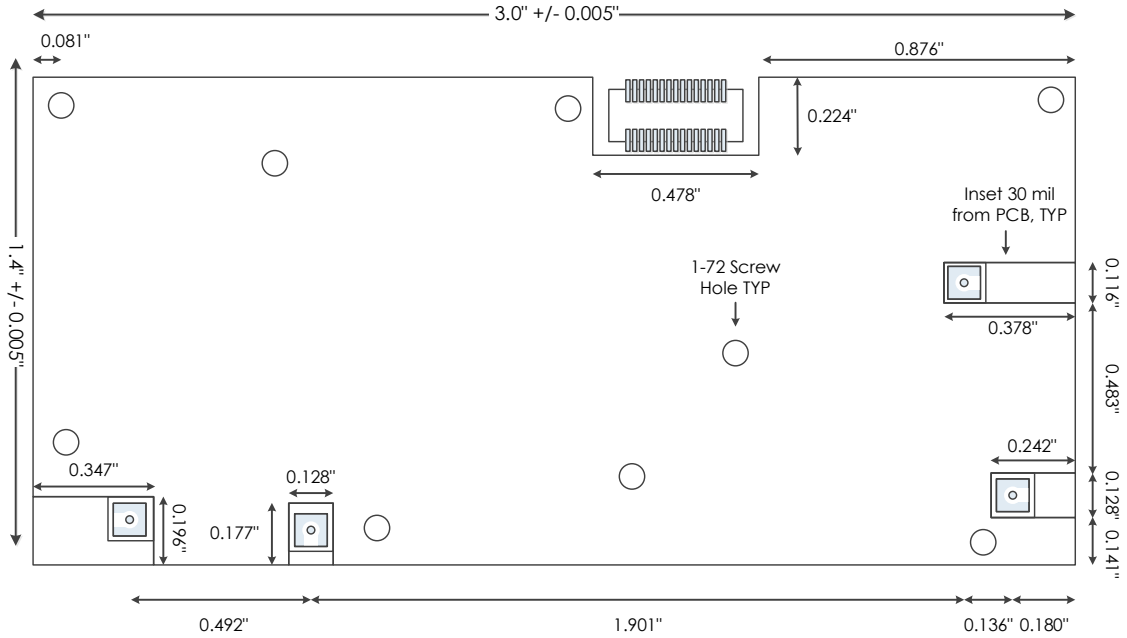
Note 2: Longest tune speed is seen when switching from $F_c \leq 5500$ to $F_c > 5500$ or from $F_c > 5500$ to $F_c \leq 5500$. Switching between center frequencies in either $F_c \leq 5500$ range or $F_c > 5500$ range will follow typical tuning speed.

Note 3: External reference input impedance is 50 Ohms. Tolerant of sine wave or square wave input. Reference waveform may affect spurious and phase noise performance

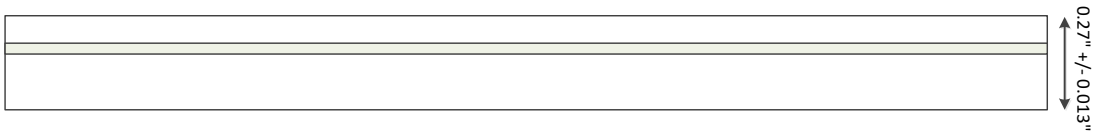
MECHANICAL DETAILS

Mechanical Drawing

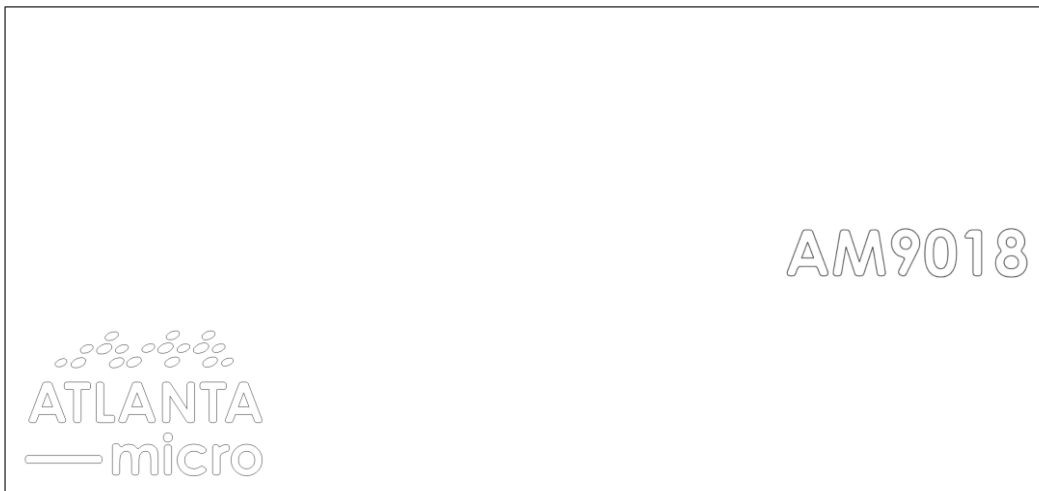
Bottom View



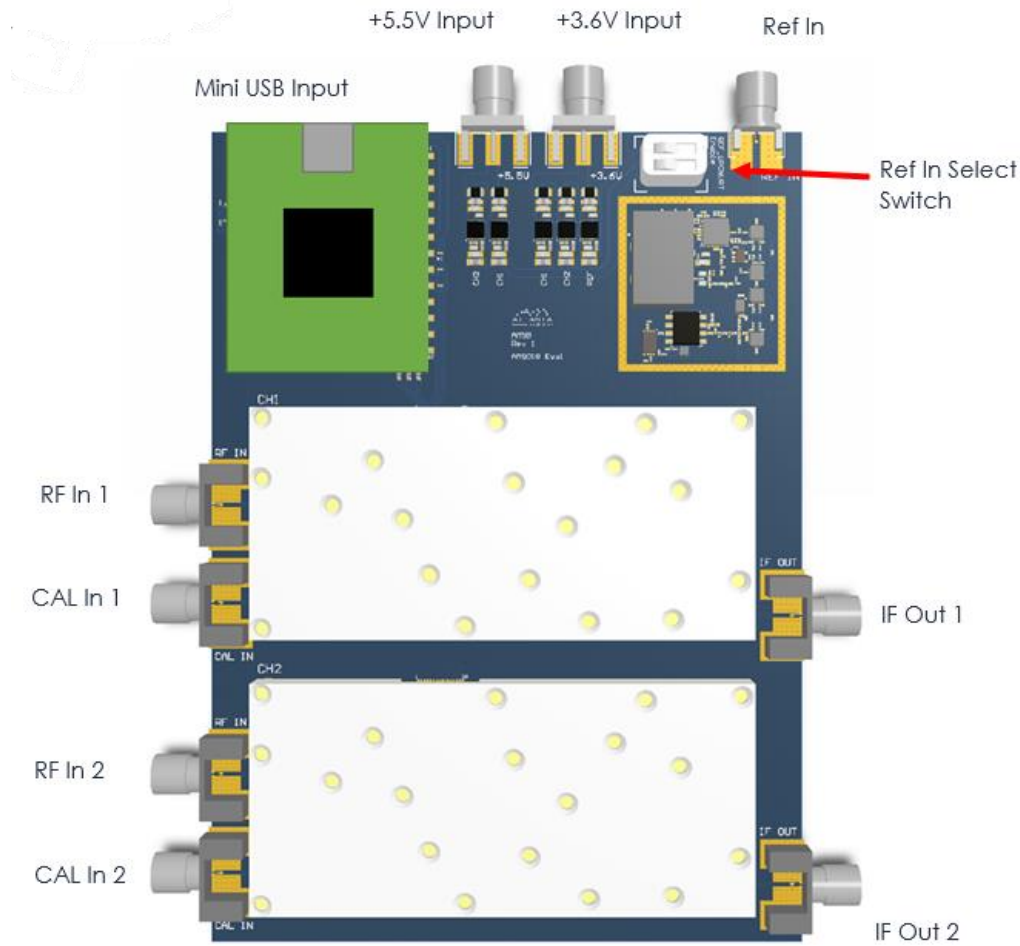
Side View



Top View



EVALUATION PC BOARD



*Note 1: Evaluation board supports up to two tuners to test phase coherent operation if desired.



Corporate Headquarters

50 Minuteman Road
 Andover, MA 01810 USA
 +1 978.967.1401 tel
 +1 866.627.6951 tel
 +1 978.256.3599 fax

International Headquarters

Mercury International
 Avenue Eugène-Lance, 38
 PO Box 584
 CH-1212 Grand-Lancy 1
 Geneva, Switzerland
 +41 22 884 5100 tel

Learn more

Visit: mrcy.com

For pricing details, contact: MMICsales@mrcy.com

For technical details, contact: MMICsupport@mrcy.com



The Mercury Systems logo is a registered trademark of Mercury Systems, Inc. Other marks used herein may be trademarks or registered trademarks of their respective holders. Mercury products identified in this document conform with the specifications and standards described herein. Conformance to any such standards is based solely on Mercury's internal processes and methods. The information contained in this document is subject to change at any time without notice.

